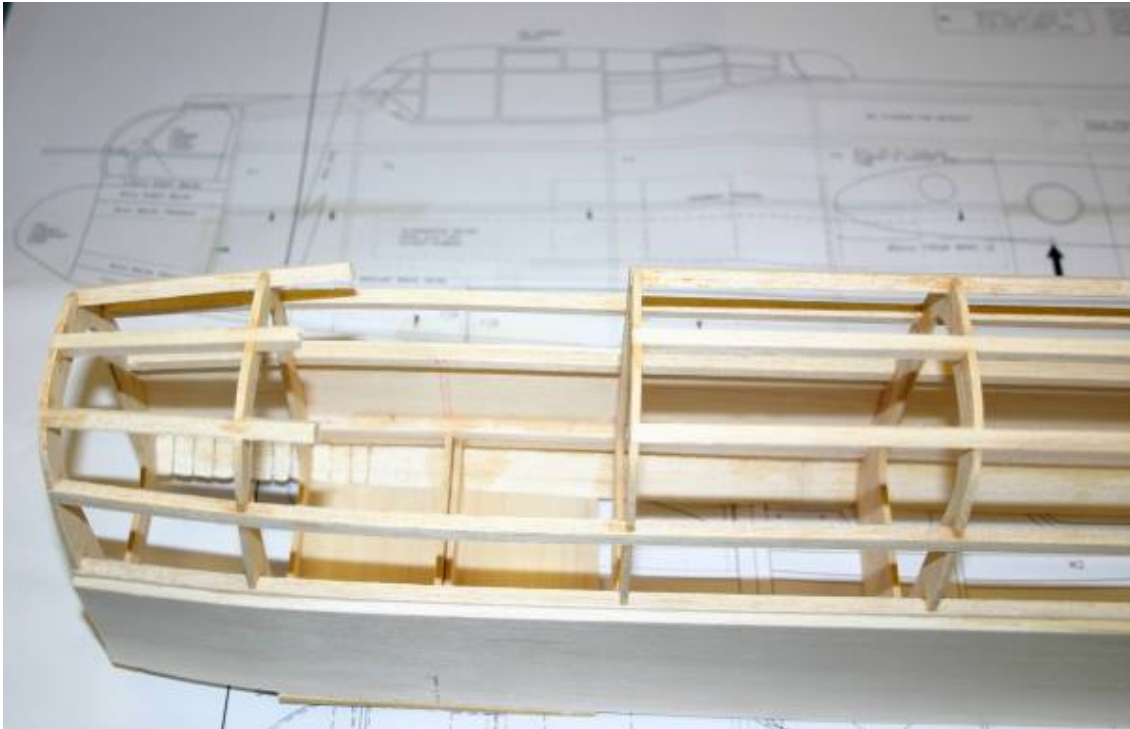


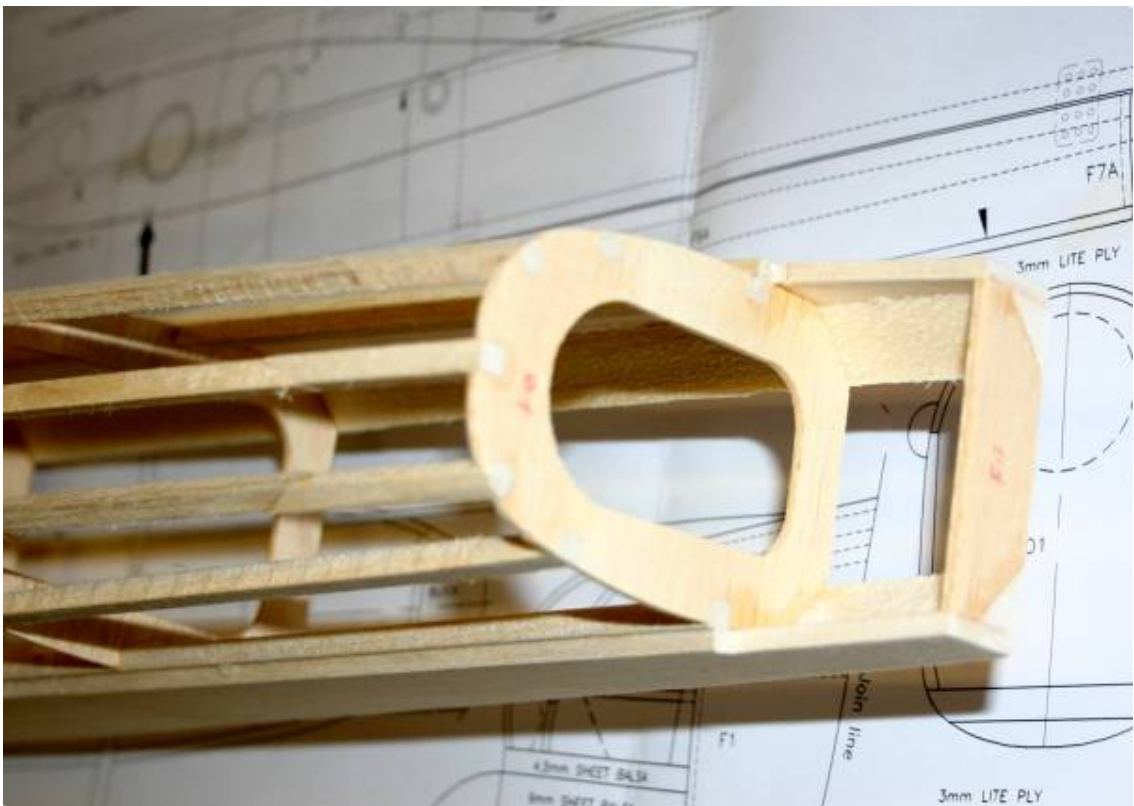
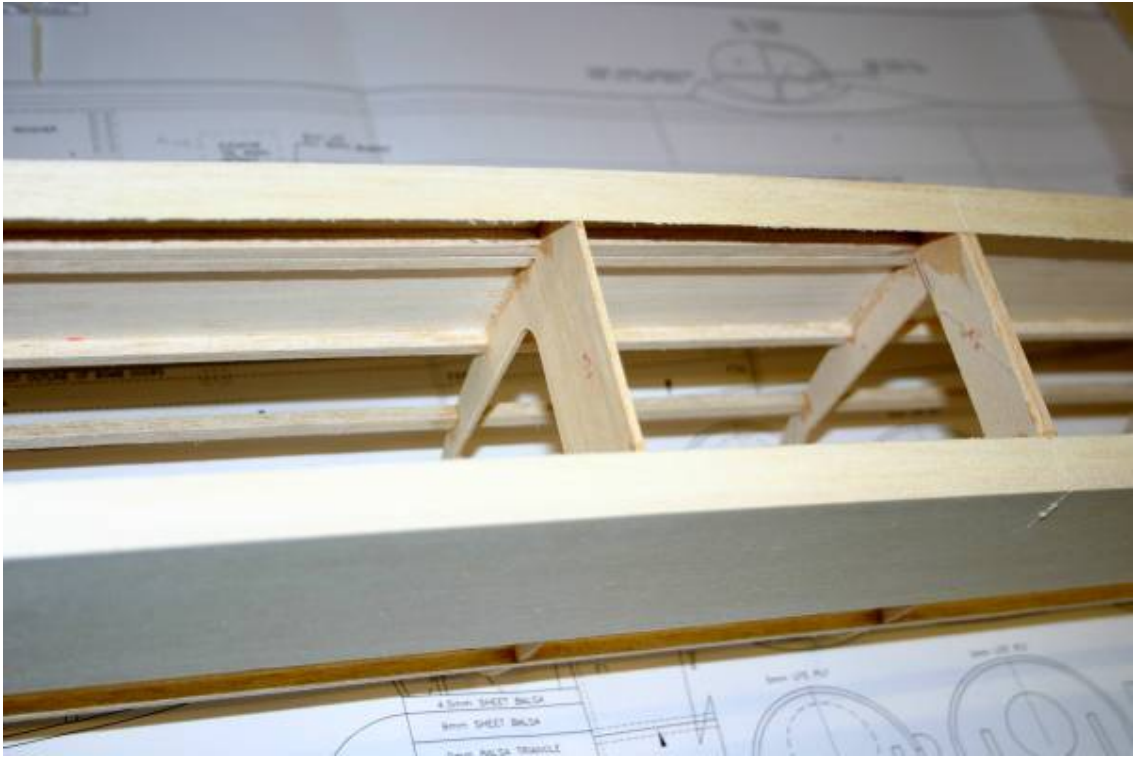
72" Lancaster construction photos

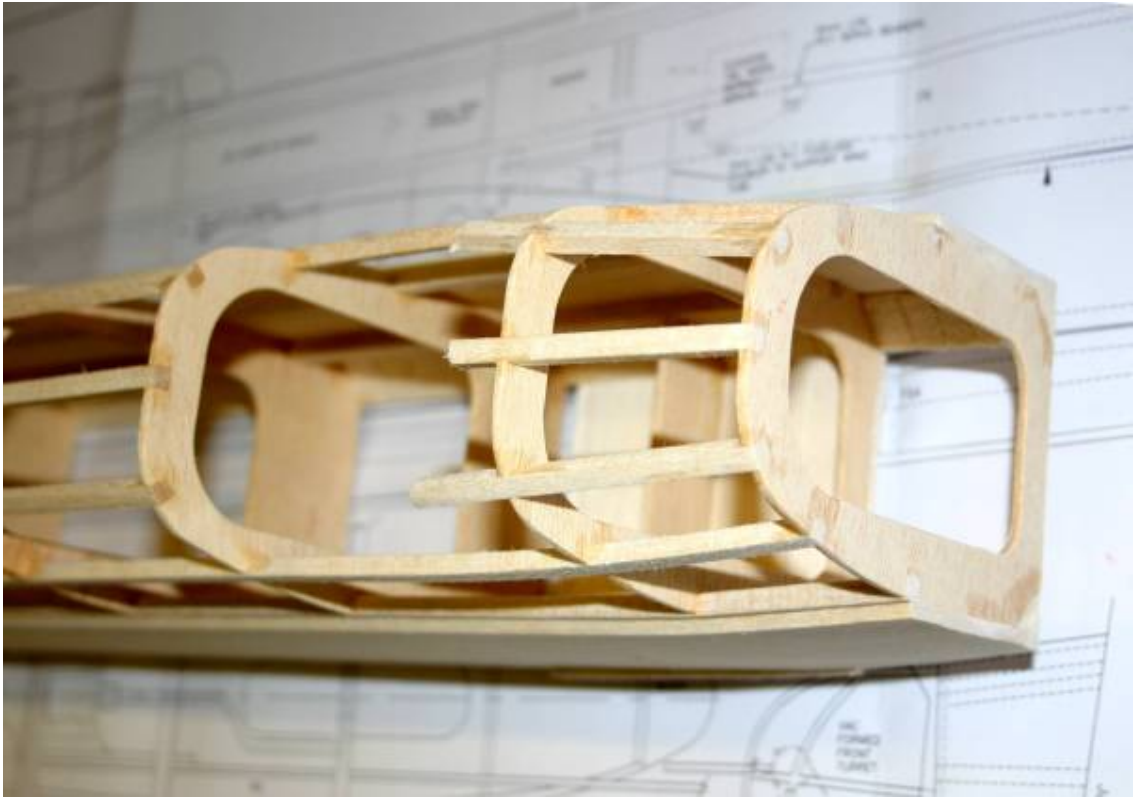


Cut the fuselage sides from the plan, apply stringer to overhang top edge, apply bottom triangle, bomb door edging before fitting formers. Finally fit top stringers

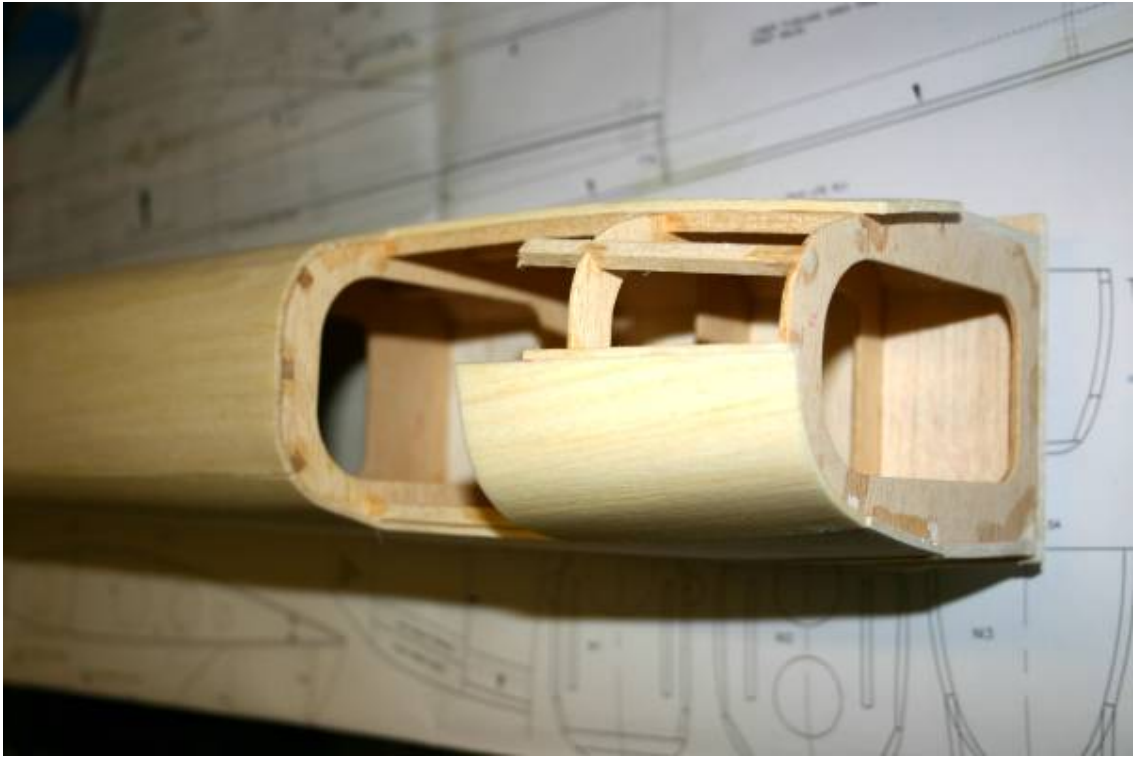


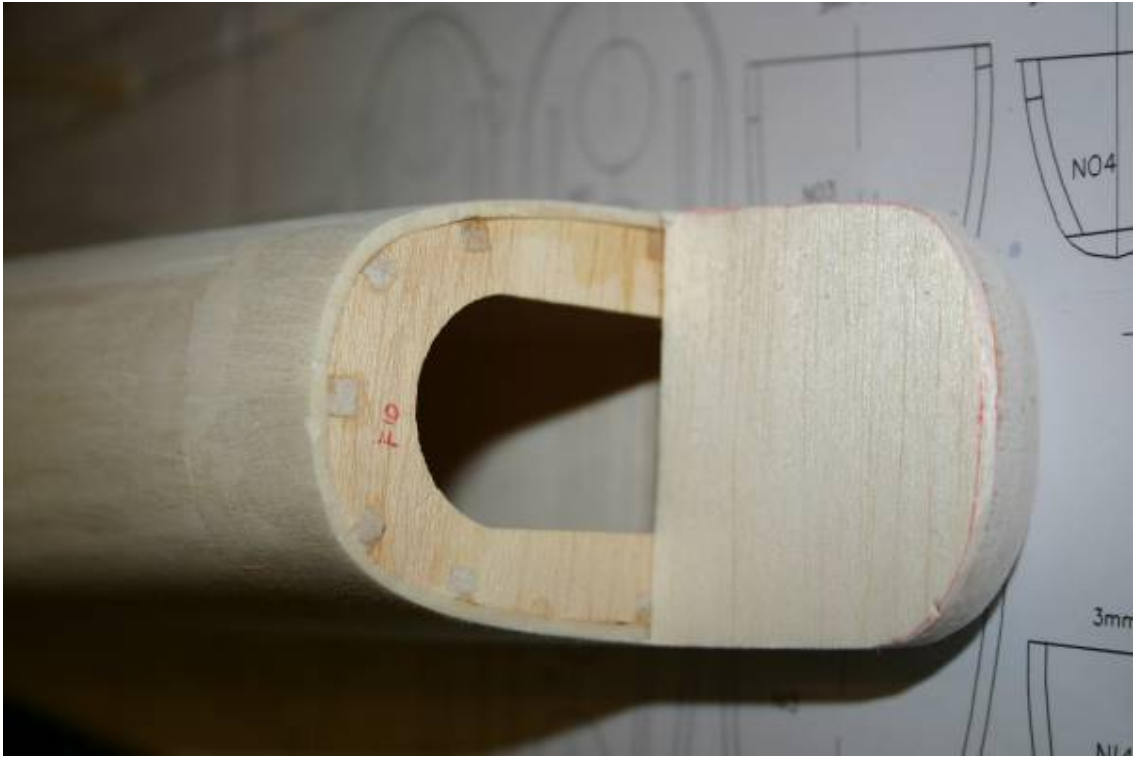
Cut between F2A & B and sheet at this point to maintain fuselage strength





Sheet along the top first before sheeting the sides



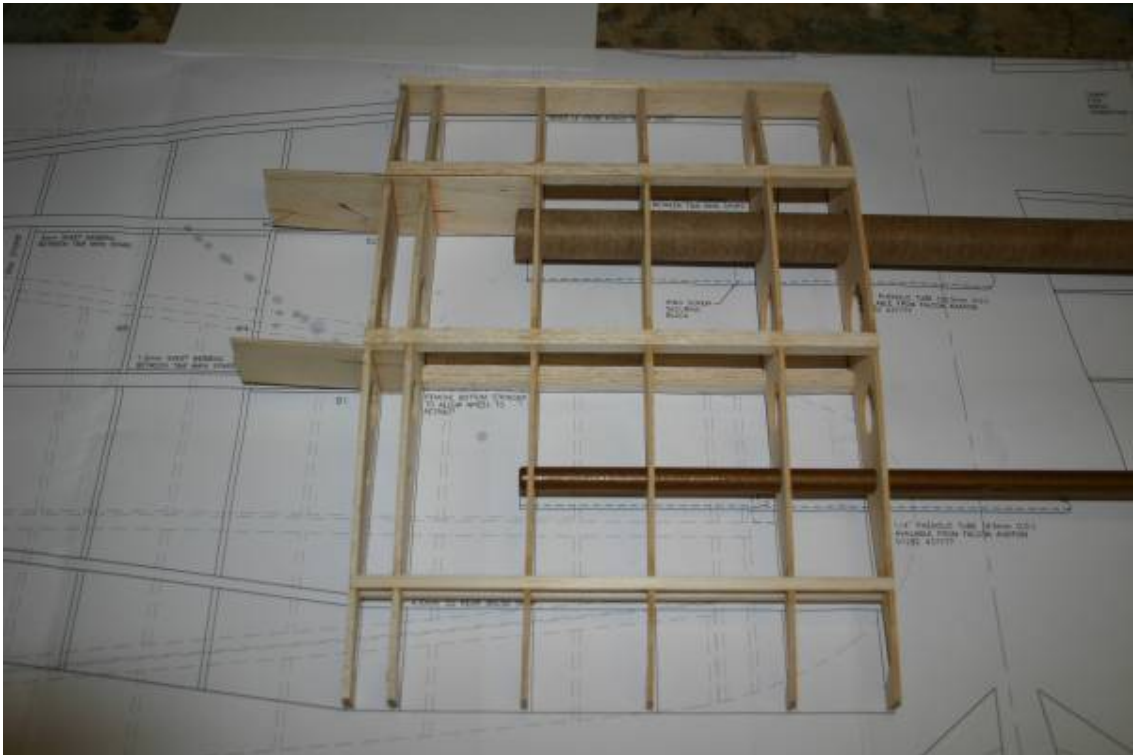




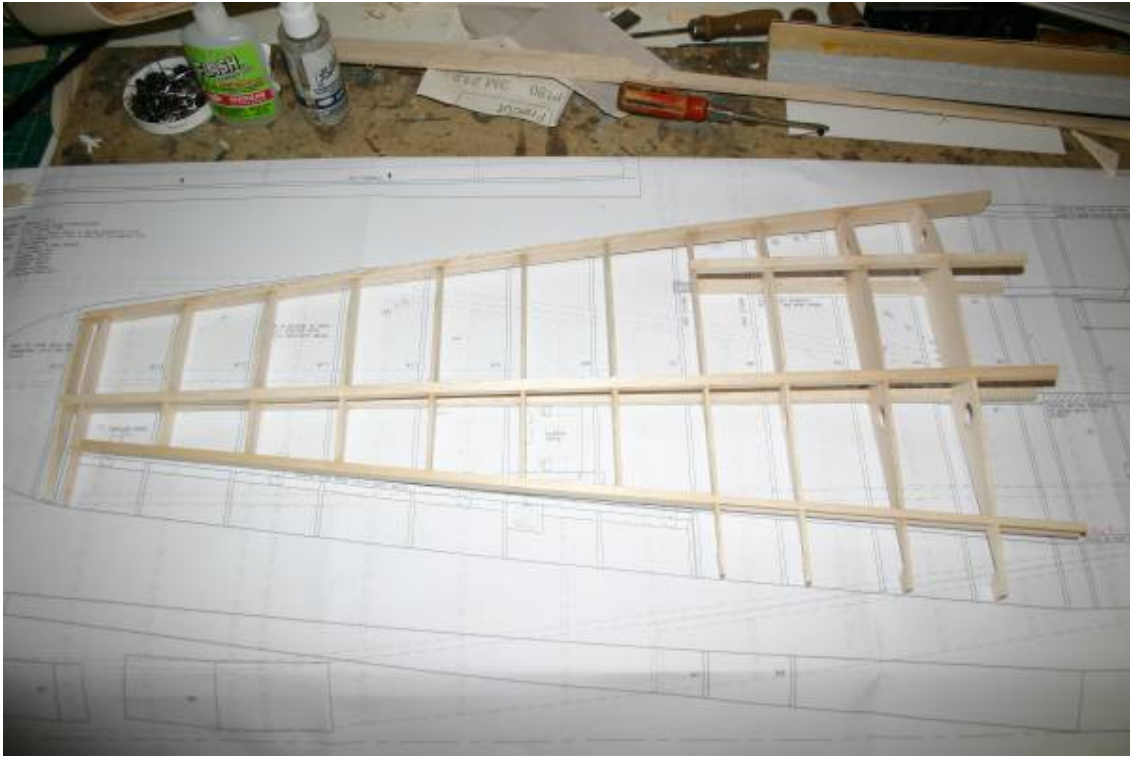
Wing tube support plates fitted



Tailplane and elevator shown made up



Inner panel made up

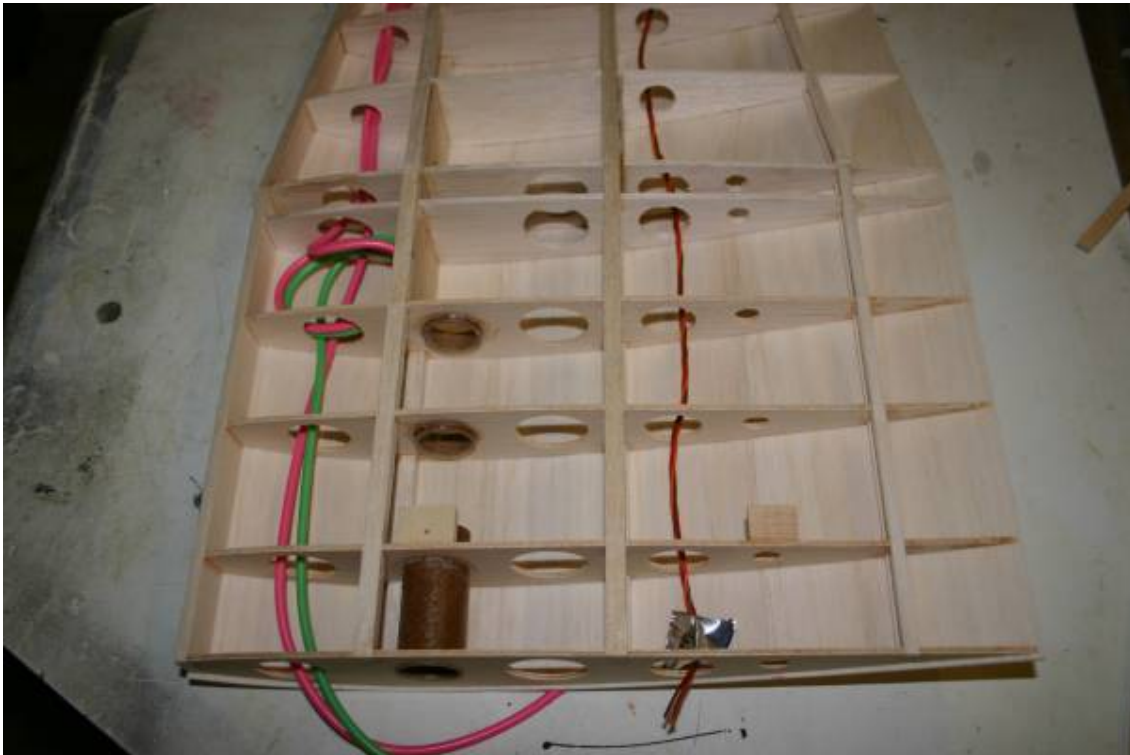


Outer panel made up

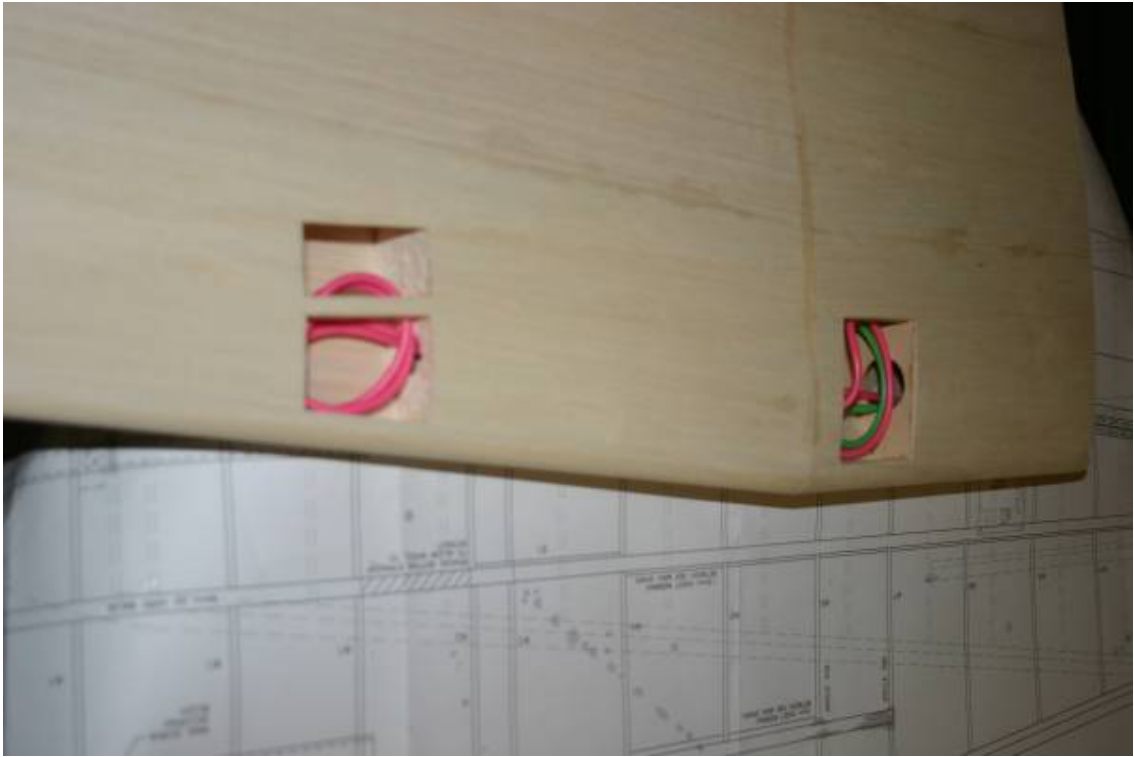


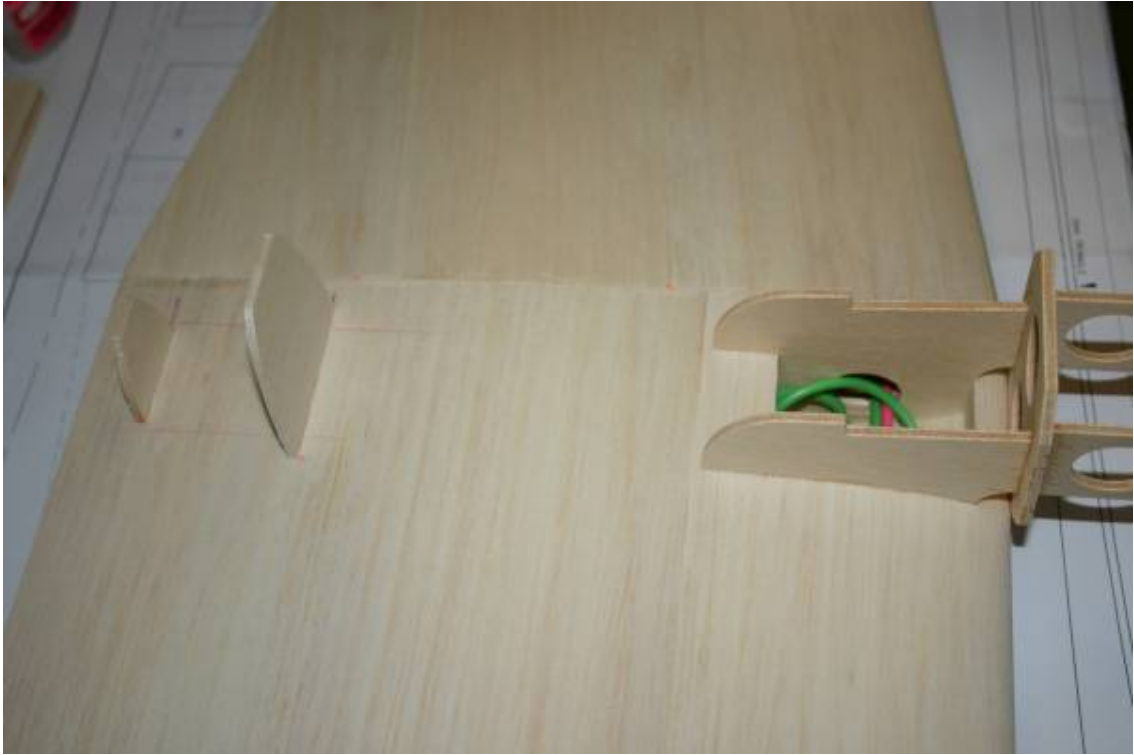
Outer & Inner panel joined and top sheet applied

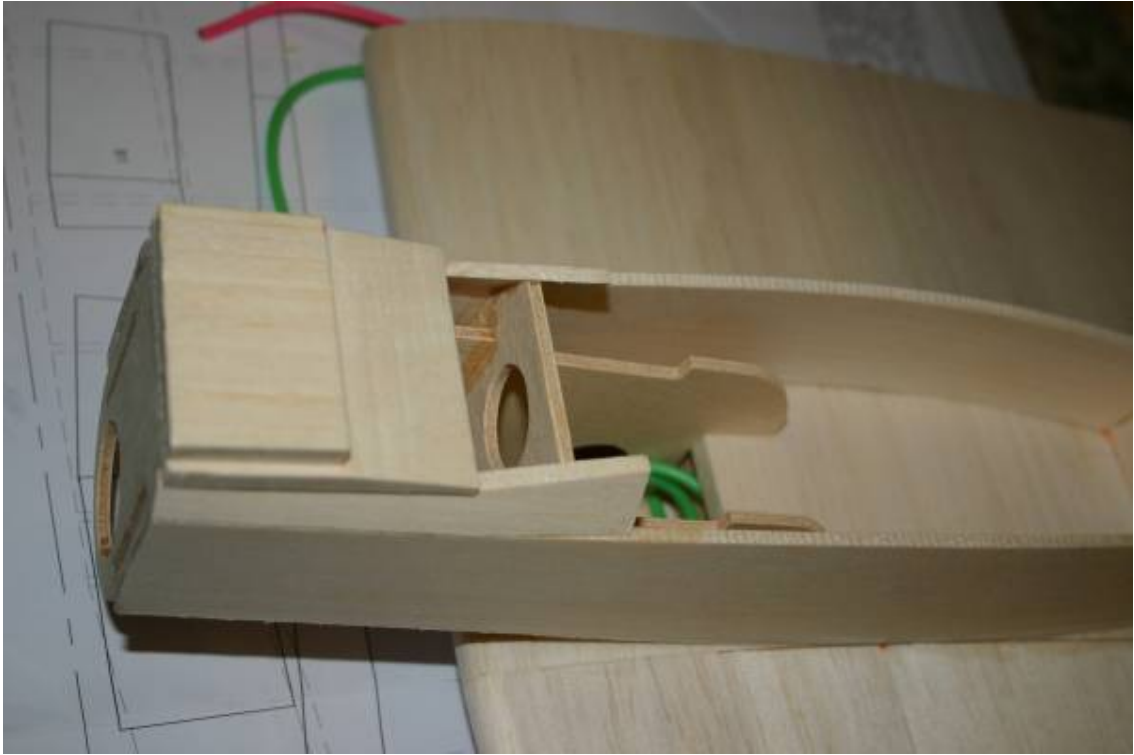


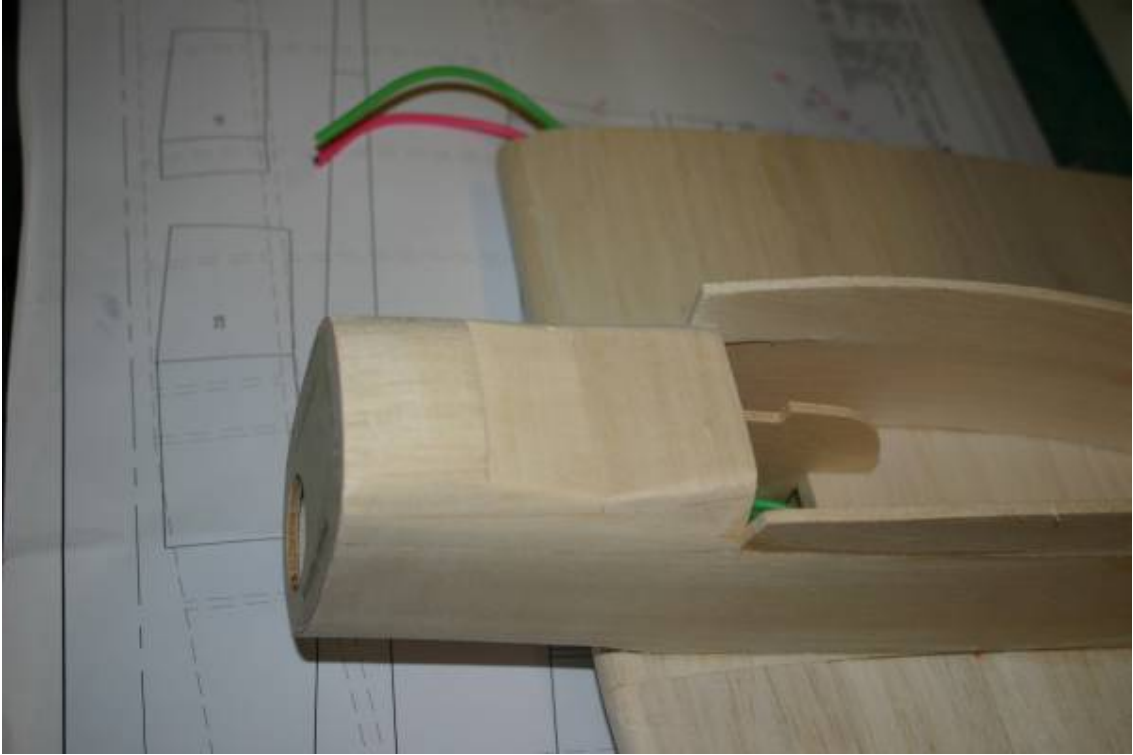


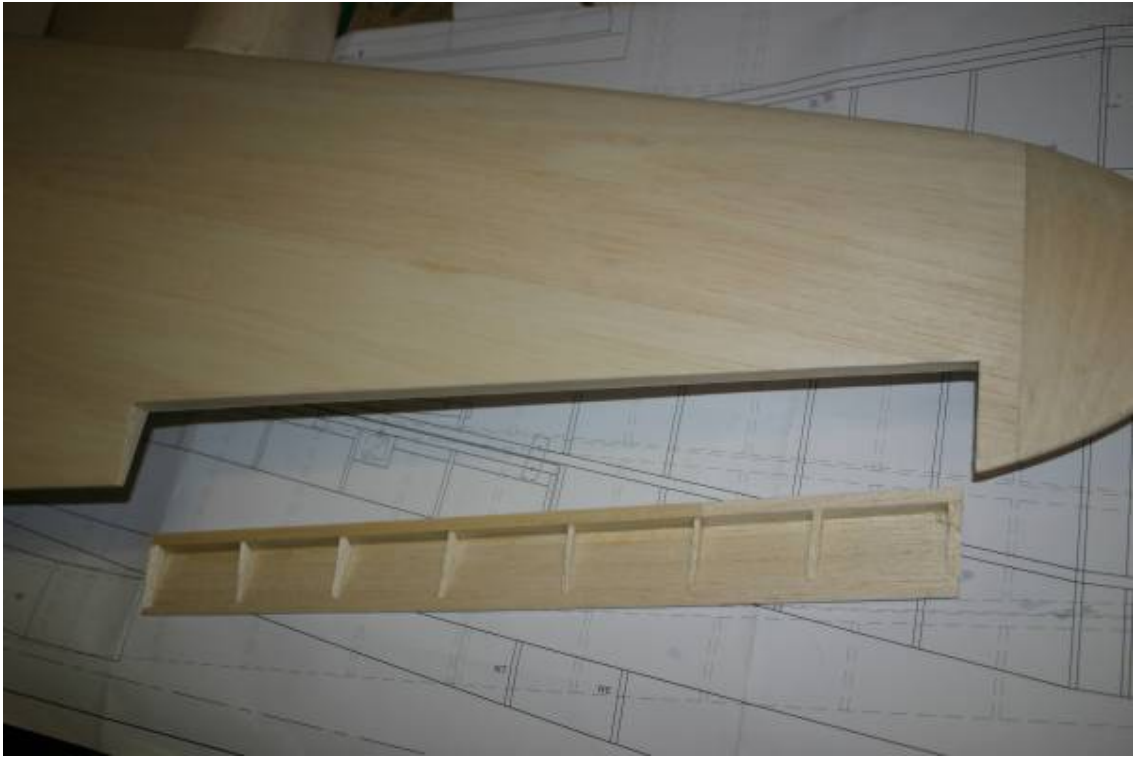
All wiring installed fitting bottom skin













Prop used on the prototype 9"x7" cut down to 8" bought from Filtehook Models

